

crane service operations, Austria

m.pagliarini, konecranes SEE



Company

Konecranes service

Service programs

Service products

Crane inspections in AT

Crane maintenance in AT

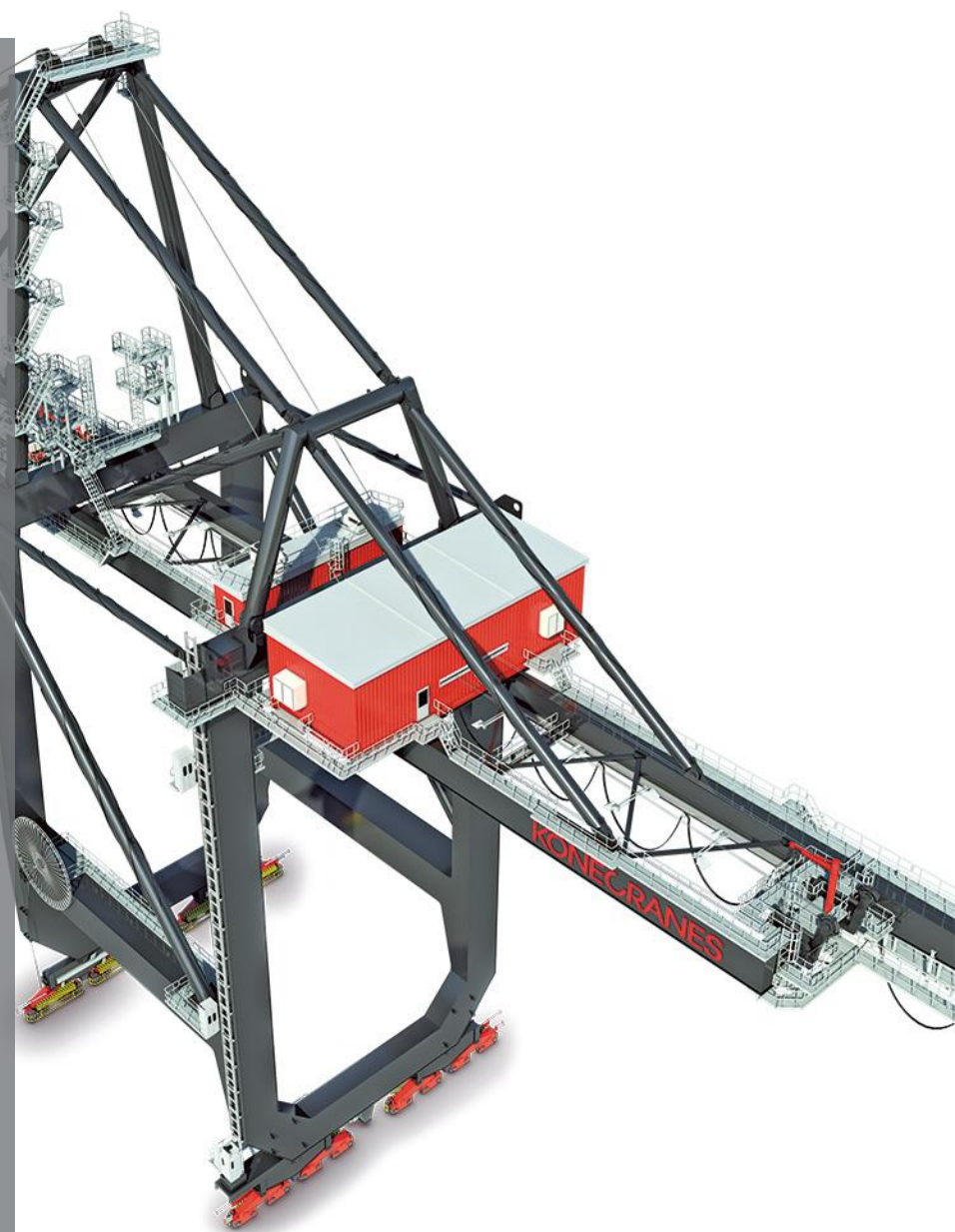
Crane drivers license in AT

Q&A

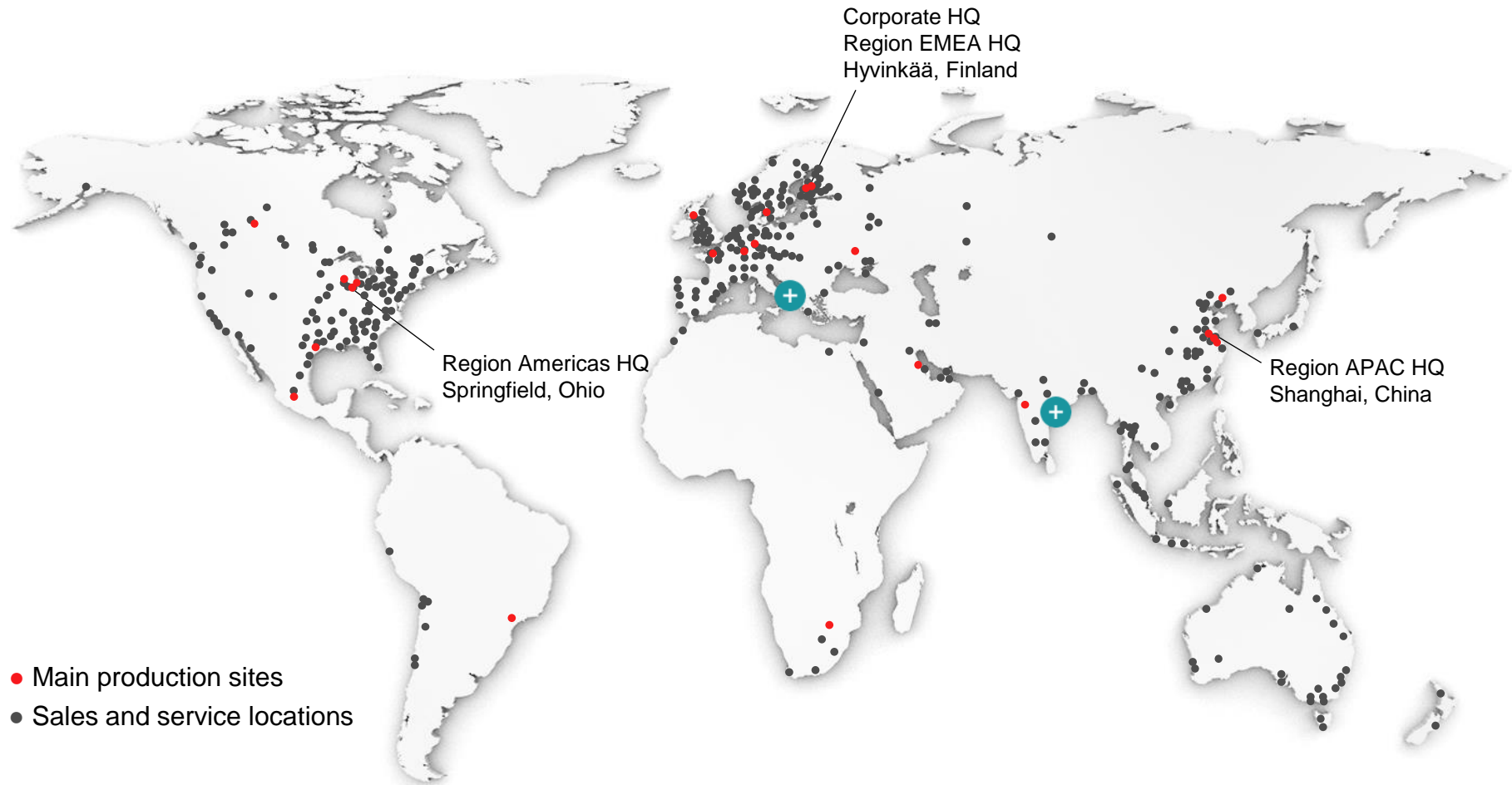
COMPANY

Konecranes is a global industry-leading group of lifting businesses. Everything we do is targeted at one goal: improving the safety and productivity of our customers' operations.

When you choose Konecranes, you acquire a trusted source of global experience and knowledge combined with local know-how to empower your material handling.



COMPANY ON THE MAP



COMPANY IN NUMBERS

11,900
EMPLOYEES

600
LOCATIONS WORLDWIDE

ACTIVE IN ALMOST
50
COUNTRIES

EQUIPMENT IS
56%
OF TOTAL SALES

SERVICE IS
44%
OF TOTAL SALES

1.75
MILLION ANNUAL
SERVICE CALLS

OVER
10,000
REMOTE
CONNECTIONS

MAINTENANCE CONTRACTS
COVERING MORE THAN
450,000
EQUIPMENT OF DIFFERENT
MAKES

€2,126
MILLION IN SALES
IN 2016

OUR PRODUCTS AND SERVICES



WORKSTATION
LIFTING SYSTEMS



INDUSTRIAL CRANES
– PRODUCTS



INDUSTRIAL CRANES
– SOLUTIONS



NUCLEAR CRANES



YARD CRANES



STRADDLE CARRIERS



SHIP-TO-SHORE
CRANES



GOLIATH
SHIPYARD CRANES



REACH STACKERS



FORKLIFT TRUCKS



COMPREHENSIVE SERVICE





DRIVERS

Our Mission

We're not just lifting things, but entire businesses.

Our Vision

We know in real time how millions of lifting devices and machine tools are performing. We use this knowledge around the clock to make **your** operations safer and more productive.

KONECRANES SERVICE



SERVICING THE GLOBE

6,200

MAINTENANCE
PROFESSIONALS

4,000

HIGHLY SKILLED
SERVICE TECHNICIANS

MORE THAN
2,400
SERVICE VANS

TRUCONNECT®
REMOTE SERVICES
LAUNCHED IN

39

COUNTRIES

1.75

MILLION ANNUAL
SERVICE CALLS

SERVICE IS
42%

OF TOTAL SALES

MAINTENANCE CONTRACTS
COVERING MORE THAN

450,000

EQUIPMENT OF DIFFERENT
MAKES

60

REMOTE SUPPORT CASES
PER MONTH

SERVICE PROGRAMS BASED ON YOUR NEEDS



IF YOU NEED LESS

JUST THE BASICS

Inspections, spare parts, breakdown response.

FOUNDATION OF LIFECYCLE CARE

IF YOU NEED MORE

BEYOND PREVENTIVE MAINTENANCE

Full scope outsourcing and operations.

EVOLUTION OF SERVICES TO REAL-TIME

REACTIVE

PREVENTIVE

REAL-TIME



INSPECTIONS AND PREVENTIVE MAINTENANCE

- [MAINMAN Planned Maintenance](#)
- [MAINMAN Assessment](#)
- [Preventive Maintenance Inspections](#)
- [Routine Maintenance](#)
- [Compliance Inspections](#)

CORRECTIVE MAINTENANCE AND RETROFITS

- [Hoist and Crane Repair](#)
- [Wire Rope Hoist](#) and [Electric Chain Hoist Replacement](#)
- Retrofits – [ControlPro](#), [Inverter](#), [LED Lighting](#), [Radio Remote Controls](#)
- [Smart Features](#)



^ CONSULTATION SERVICES



- [RailQ Runway Survey](#)
- [CraneQ Crane Geometric Survey](#)
- [RopeQ Magnetic Rope Inspection](#)
- [Crane Reliability Study](#)
- [Gear Case Inspection](#)
- [Coupling Inspection](#)
- [Hook/Shank Inspection](#)
- [Below-the-Hook Inspection](#)
- [Design Life Analysis](#)
- [Steel Structure Analysis](#)
- [Rope Analysis](#)
- [Hook Analysis](#)
- [Crane Operator Training](#)



MODERNIZATIONS, PARTS,
TRUCONNECT



MODERNIZATIONS

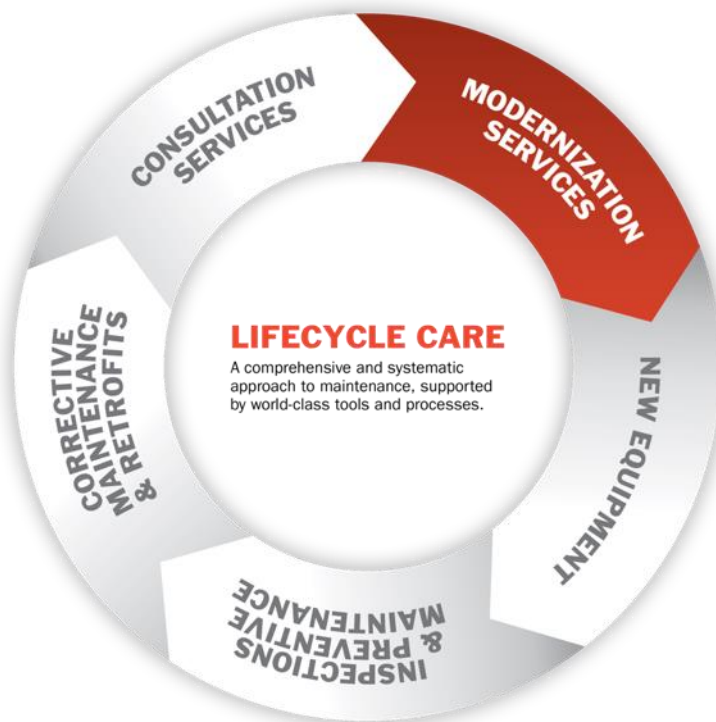
- [Hoist, Trolley and Crane Upgrades](#)
- [Control Upgrades](#)

PARTS

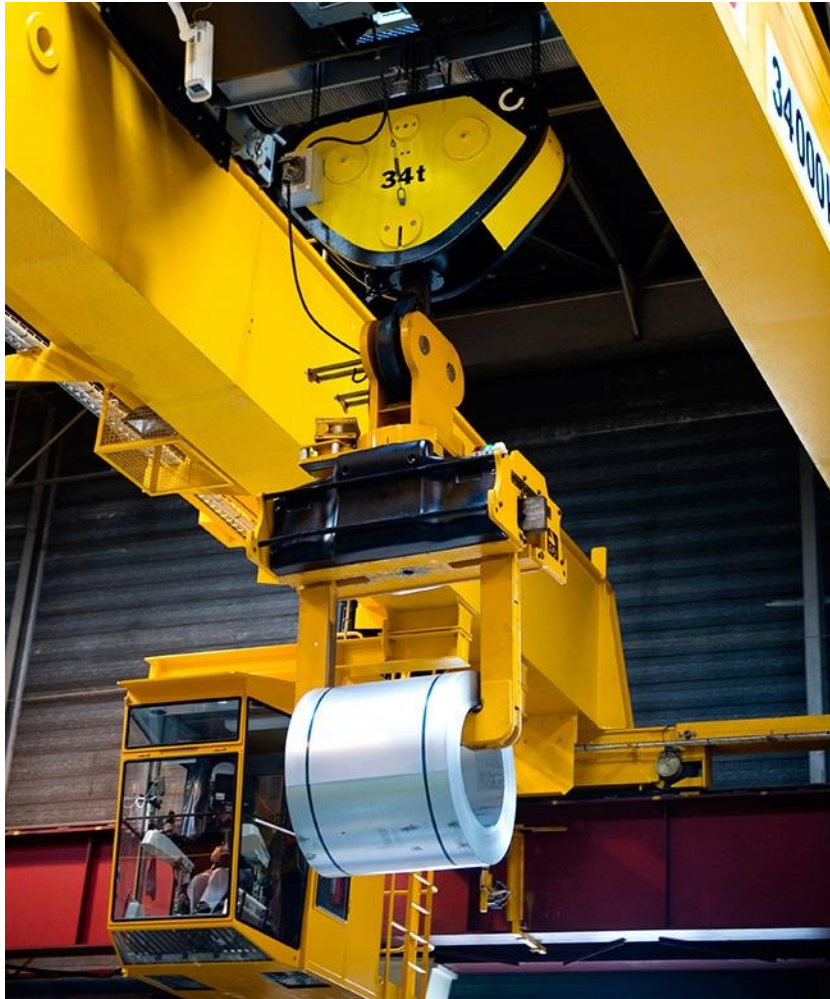
- Genuine Konecranes Parts
- Parts for Any Brand
- Equivalent Parts
- Performance Parts
- Reverse Engineering
- Rebuilds
- Crane Parts Manufacturing

TRUCONNECT

- [Remote Monitoring](#)
- [Remote Support](#)



Cranes, inspections and maintenance in Austria



AT: inspection after installation

- Legal basis : BGBl. II Nr. 21/2010
AMVO §7
 - Interval : before putting into service
 - Scope : ÖNORM M9602, check crane standards, function of break* and max. deflection, limit switches, safety and warning systems
 - Executive organ : ZV-Eng, TÜV,
 - Documentation : creating the crane book, ÖNORM M9602 B1 and an written inspection protocol
- * With SWL x1,5 <1to; SWL x 1,25 1-100to; SWL x1,0 >100to



AT: Daily crane inspection

- Legal basis : ÖNORM M9601
- Interval : daily
- Scope : ÖNORM M9601 (3.3), check function of break*, limit switches and warning systems before putting crane to service
- Executive organ : crane driver
- Documentation : not required by standard but recommended

* With max crane load of the day

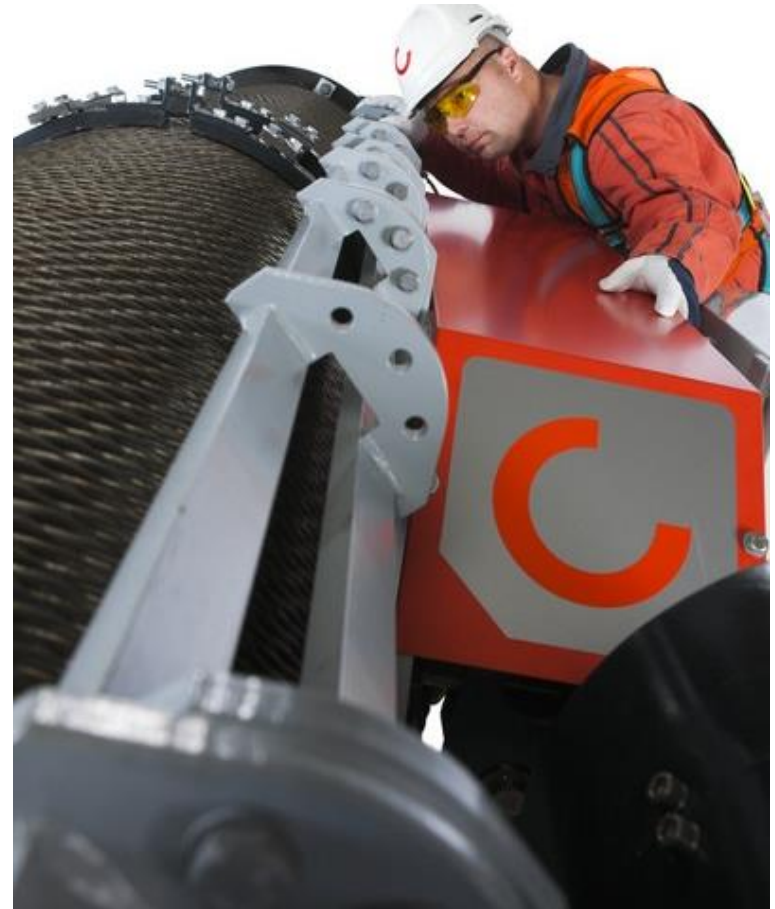


AT: Statutory lifting equipment inspection

- Legal basis : ASchG §17 (1) and BGI. II Nr. 21/2010 AMVO §8
- Interval : 12 M, max. 15 M but 1x annually
- Scope : AMVO §8 (2) and ÖNORM M9602, check function of hoisting break*, limit switches, overload device, couplings, wheels, rope, breaks and warning systems
- Executive organ : ZV-Eng, crane-inspector from manufacturer or listed crane company, TÜV, crane specialist from customer**
- Documentation : into crane book, ÖNORM M9602 B1, written form

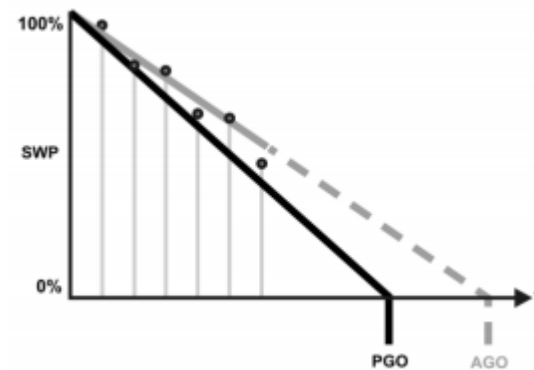
*With nominal crane load

**4 year interval 2nd party

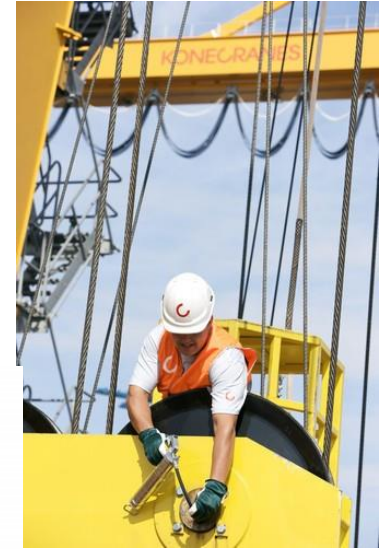


AT: Crane maintenance

- Legal basis : ASchG §38 (1) and BGBl. II Nr. 21/2010 AMVO §16
- Interval : max. every 10% reduction of SWP% or annually
- Scope : ÖNORM M9601 (3.5), according to manufacturers service regulations
- Executive organ : crane-technician from manufacturer or listed crane company, crane specialist from customer
- Documentation : with maintenance record, written form, no special format required



SWP = Safe Working Period
PGO = Predicted General Overhaul
AGO = Actual General Overhaul
T = Time



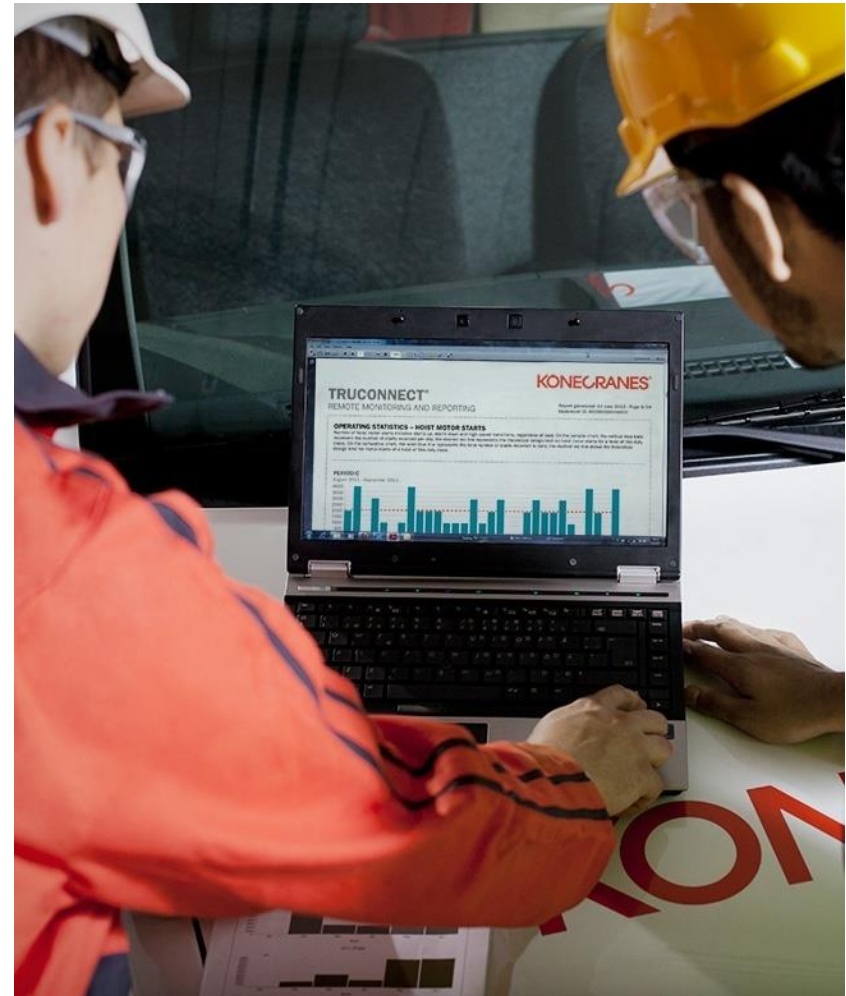
AT: Statutory electric inspection

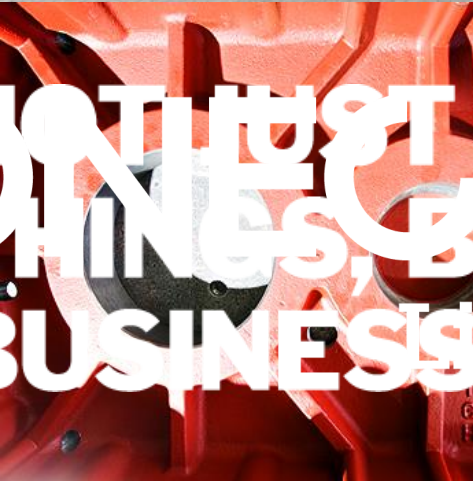
- Legal basis : BGBl. II Nr. 33/2012
ESV §9
- Interval : max. every 5 years,
depending on environment
- Scope : ÖVE/ÖNORM EN60204-
(32), check and measurement of
grounding system, potential
resistors, protective conductor
system, rotating field....
- Executive organ : certified
electric, crane-electrics specialist
from manufacturer or listed crane
company, crane specialist from
customer
- Documentation : with E-
inspection record, no special
form required



AT: Crane drivers license

- Legal basis : BGI. II Nr. 13/2007 FKV §6
- Interval : 1x
- Scope : mechanical, electrical, standards and operations training, Level 1 5-30to ; Level 2 >30to
- Executive organ : every crane related company or training institute, certified from WKO
- Documentation : written exam and crane drivers license





KONECRANES® THINGS, BUT WE'RE BUSINESS. Helping Businesses

